

Šablona III/2 - Inovace a zkvalitnění výuky prostřednictvím ICT

PREPOSITIONS

opposite, between, next to

COMPARE

Anotace: materiál obsahuje 2 listy úvodu, 3 listy s úkoly, 1 list Slovníček a 4 listy s řešením

Šablona: III/2

Název: Inovace a zkvalitnění výuky prostřednictvím ICT

Téma: Prepositions opposite, between, next to; compare

Autor: Mgr. Jana Jandíková

Očekávaný výstup: žák rozumí slovům a jednoduchým větám, umí doplnit větu, složí větu ze slov, porovnává, používá předložky

Klíčová slova: read, complete, look, match, opposite, between, next to, town

Druh učebního materiálu: materiál pro interaktivní tabuli Active Board

Cílová skupina: žák 1. stupně ZŠ

Typická věková skupina: 10 - 11 let

Použité zdroje a materiál: učebnice a pracovní sešit Happy street New Edition, Stella Maidment, Lorena Roberts, Oxford University Press 2009
Pracovní sešit Chit Chat 2, Paul Shipton, Oxford University Press 2002



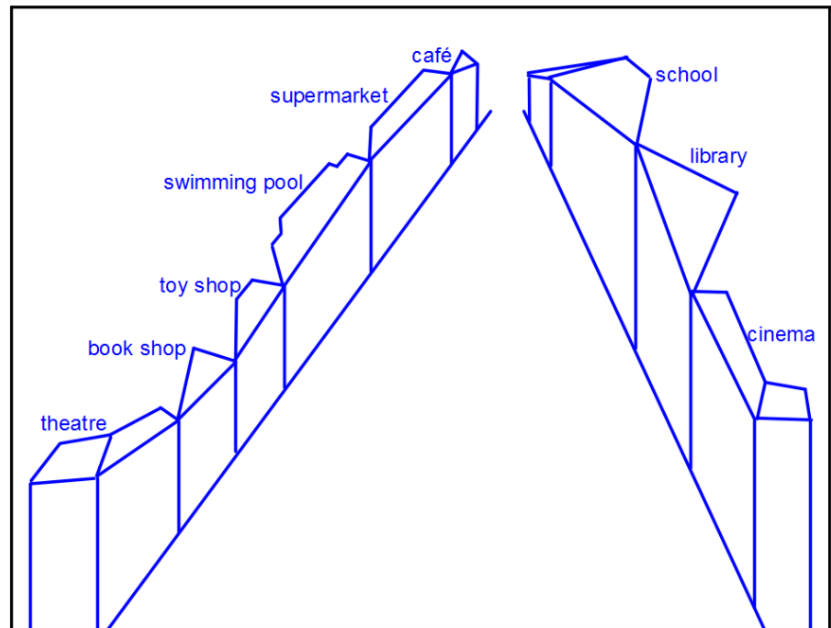
Autorem materiálu a všech jeho částí, není-li uvedeno jinak, je Mgr. Jana Jandíková

Look at the picture
and complete.

between
between

next to
next to

opposite
opposite



The library is the cinema.

The theatre is the cinema.

The book shop is the theatre and the toy shop.

The toy shop is the book shop.

The school is the supermarket.

The supermarket is the café and the swimming pool.

Read and match.

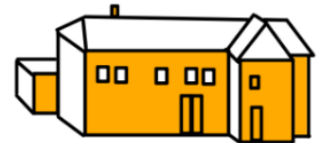
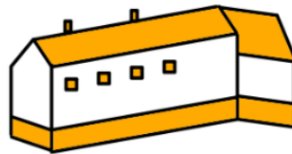
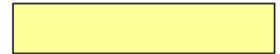
The museum is next to the school.

The theatre is opposite the museum.

The supermarket is between the library and theatre.

The cinema is next to the school ,
opposite the library.

museum



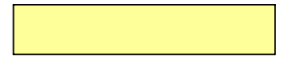
theatre

cinema

school

supermarket

library



Make sentences about animals.

shorter

faster

a tiger

a hippo

taller

thinner

a monkey

a snake

smaller

an elephant

a chicken

fatter

stronger

an earthworm

a penguin

a frog

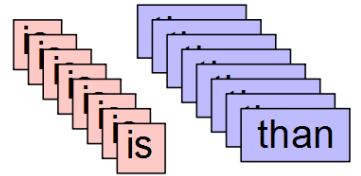
bigger

a giraffe

a turtle

a mouse

a badger



SLOVNÍČEK

badger - jezevec

chicken - slepice

earthworm - žížala

elephant - slon

frog - žába

giraffe - žirafa

hippo - hroch

monkey - opice

mouse - myš

penguin - tučňák

snake - had

tiger - tygr

turtle - želva

bigger - větší

faster - rychlejší

fatter - tlustší

shorter - kratší

smaller - menší

stronger - silnější

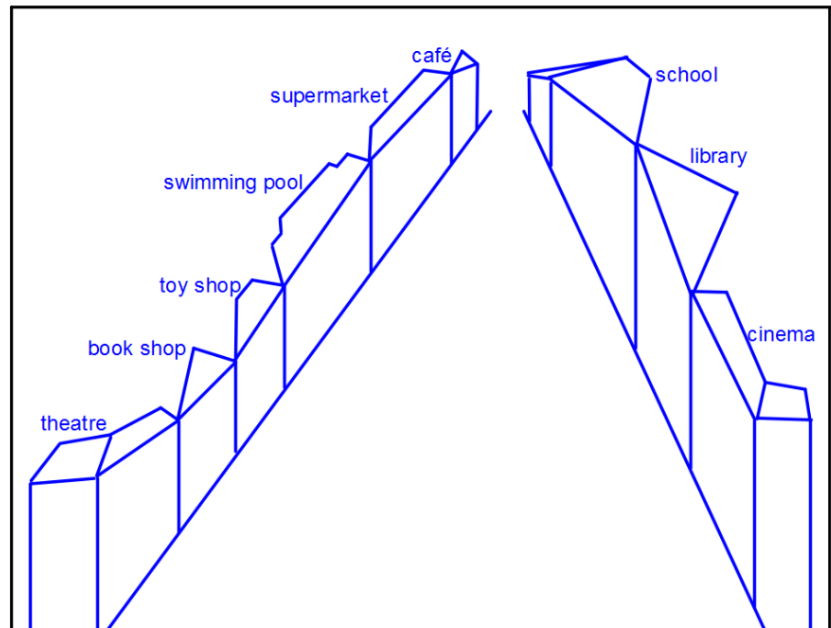
taller - vyšší

thinner - tenší

[back](#)

ANSWERS

Look at the picture
and complete.



The library is **next to** the cinema.

The theatre is **opposite** the cinema.

The book shop is **between** the theatre and the toy shop.

The toy shop is **next to** the book shop.

The school is **opposite** the supermarket.

The supermarket is **between** the café and the swimming pool.

Read and match.

The museum is next to the school.

The theatre is opposite the museum.

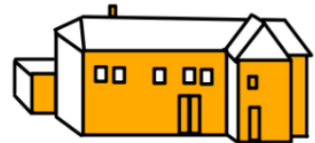
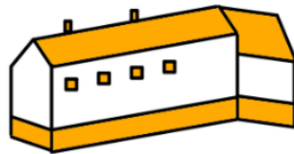
The supermarket is between the library and theatre.

The cinema is next to the school ,
opposite the library.

museum

school

cinema



theatre

supermarket

library

Make sentences about animals.

a frog

is

than

thinner

smaller

a tiger is stronger than a monkey

An earthworm is shorter than a snake

A giraffe is taller than a chicken

A hippo is fatter than a penguin

A mouse is faster than a turtle

An elephant is bigger than a badger

